

3.1.6 Multiple Sclerosis Research Group

Publications: **8**

Q1: **1**

COMPOSITION

Yolanda Aladró Benito. Médico Adjunto Neurología. Hospital Universitario de Getafe. Profesor Asociado. Universidad Europea de Madrid

Laura Lillo Triguero. Facultativo Especialista de Área en Neurología. Hospital Universitario de Getafe

Guillermo Martín Ávila. Facultativo Especialista de Área en Neurología. Hospital Universitario de Getafe

Alejandro Méndez Burgos. Facultativo Especialista Adjunto Neurología. Hospital Universitario de Getafe

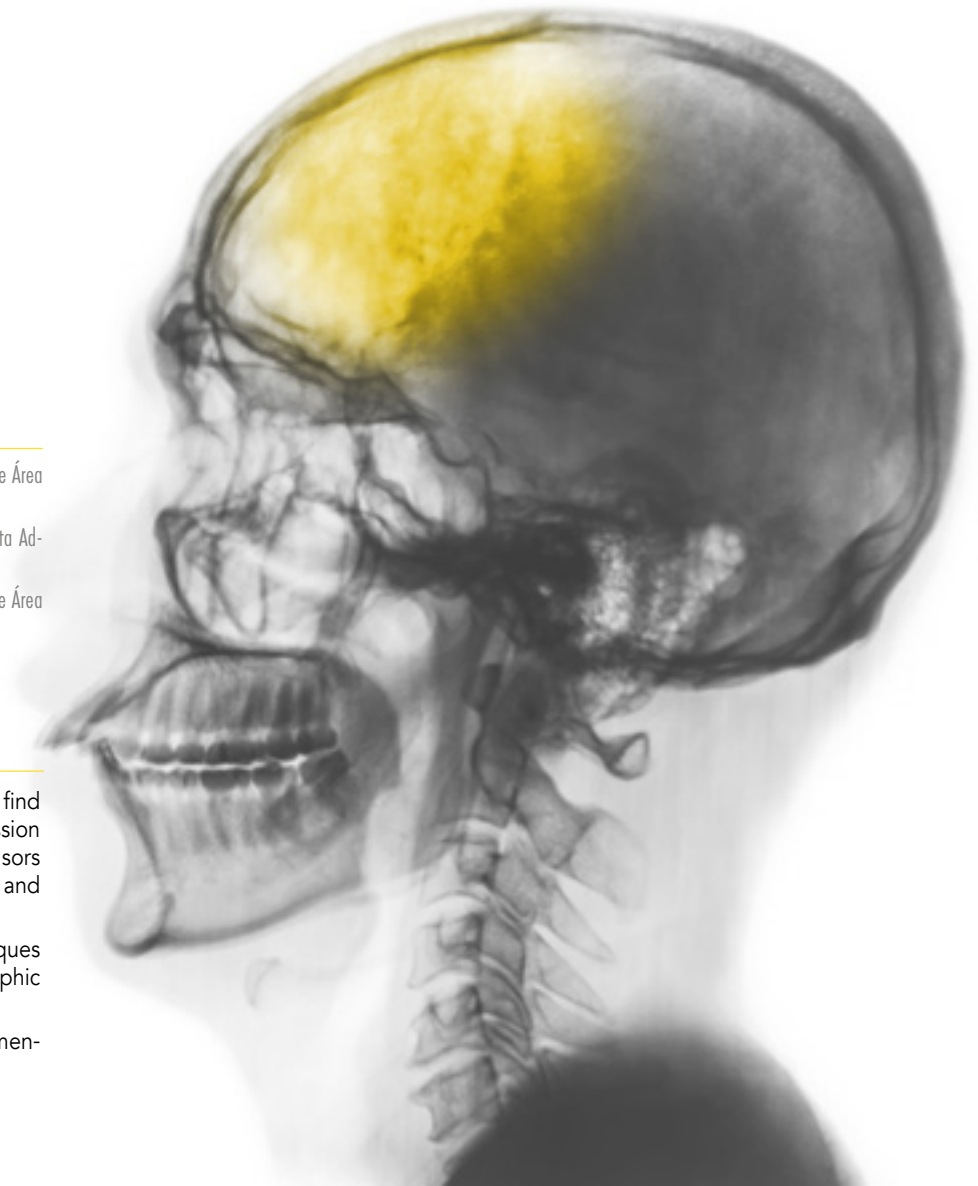
Belén Pilo de la Fuente. Facultativo Especialista de Área en Neurología. Hospital Universitario de Getafe

STRATEGIC OBJECTIVE

To assess the progression of multiple sclerosis using gait analysis with inertial sensors to find more objective, sensitive and reliable measures to detect and monitor the clinical progression of progressive Multiple Sclerosis. To validate selected measures provided by inertial sensors to monitor gait in a prospective cohort of patients with Multiple Sclerosis in early (primary and secondary) stages.

We are specially focused in the assessment of the efficacy and effectiveness of techniques such as Mindfulness and we evaluate hypothetical mediators of response, such as neurotrophic factors or factors related to inflammatory response.

Moreover, the group is involved in the evaluation of new treatments or new indications in mental disorders through the participation in clinical trials.





RESEARCH LINES

- Gait study with biosensors in multiple sclerosis patients.
- Covid-19 in multiple sclerosis.
- Late-onset multiple sclerosis.
- Use of motion sensors in essential tremor.

RESEARCH ACTIVITY

● Publications

- Coll-Martínez C, Quintana E, Buxo M, Salavedra-Pont J, Gasull-Vicens L, Quiroga-Varela A, Costa-Frossard L, Villar Luisa M, Fernández-Díaz E, Gracia J, Aladró Y, Méndez-Burgos A, Cerezo M, Ramio-Torrenta L, Gich J. Oligoclonal IgM bands are a promising biomarker for long-term cognitive outcomes in multiple sclerosis. *Mult Scler Relat Disord.* 2022; 68: 104397. Article. IF: 4; Q2
- de la Fuente BP, Martín-Moro JG, Ávila GM, Burgos AM, Barrau LR, Thuissard I, Martín MT, Benito YA. Risk and prognostic factors for SARS-CoV-2 infection in Spanish population with multiple sclerosis during the first five waves. *Front Neurol.* 2022; 13: 1001429. Article. IF: 3.4; Q2
- de la Maza SS, Muñoz JS, de la Fuente BP, Thuissard I, Andréu-Vázquez C, Sánchez-Seco VG, Salgado-Camara P, Costa-Frossard L, Monreal E, Ayuso-Peralta L, García-Vasco L, García-Domínguez JM, Martínez-Ginés ML, Fernández CM, Díaz-Díaz J, Oreja-Guevara C, Gómez-Moreno M, Martín H, Rubio-Flores L, Blasco MR, Villar-Guimerans LM, Aladró Y. Early predictive risk factors for dimethyl fumarate-associated lymphopenia in patients with multiple sclerosis. *Mult Scler Relat Disord.* 2022; 59: 103669. Article. IF: 4; Q2
- Fernández-Velasco JI, Monreal E, Kuhle J, Meca-Lallana V, Meca-Lallana J, Izquierdo G, Oreja-Guevara C, Gascón-Giménez F, de la Maza SS, Walo-Delgado PE, Lapuente-Suanzes P, Maceski A, Rodríguez-Martín E, Roldán E, Villarrubia N, Saiz A, Blanco Y, Díaz-Pérez C, Valero-López G, Díaz-Díaz J, Aladró Y, Brieva L, Íñiguez C, González-Suárez I, de Antonio LAR, García-Domínguez JM, Sabin J, Llufríu S, Masjuan J, Costa-Frossard L, Villar LM. Baseline inflammatory status reveals dichotomic immune mechanisms involved in primary-progressive multiple sclerosis pathology. *Front Immunol.* 2022; 13: 842354. Article. IF: 7.3; Q1
- García-Pastor A, Gil-Núñez A, Ramirez-Moreno JM, González-Nafria N, Tejada J, Moniche F, Portilla-Cuenca JC, Martínez-Sánchez P, Fuentes B, Gamero-García MA, de Leciñana MA, Masjuan J, Verge DC, Aladró Y, Parkhutik V, Lago A, de Arce-Borda AM, Usero-Ruiz M, Delgado-Mederos R, Pampliega A, Ximénez-Carrillo A, Bartulos-Iglesias M, Castro-Reyes E. Endarterectomy, stenting, or medical treatment for symptomatic carotid near-occlusion: Results from CAOS, a multicenter registry study. *Am J Neuroradiol.* 2022; 43(9): 1304-10. Article. IF: 3.5; Q2
- González-Escobar M, Aladró YH, Reyes-Martínez CS, Gallegos-Castillo CA, Arregui-Ojeda SM. Remarks on a sediment-hosted geothermal system in Cerro Prieto, Mexico, with a seismic reflection profile. *Geothermics.* 2022; 103: 102427. Article. IF: 3.9; Q2
- Martín-Ávila G, Vieira-Campos A, Labrador-Marcos S, Zheng XC, Méndez-Burgos A, Thuissard I, Andréu-Vázquez C, Ordieres-Mere J, Aladró Y. Patients' self-assessment of essential tremor severity by a validated scale: A useful tool in telemedicine? *Parkinsonism Relat D.* 2022; 96: 22-8. Article. IF: 4,1; Q2
- Martínez-Orozco FJ, Fernández-Arquero M, Vicario JL, Lillo-Triguero L, Ameyugo E, Peraita-Adrados R. Long-term outcome of a series of patients with narcolepsy type 1 and comorbidity with immunopathological and autoimmune diseases. *J Clin Med Res.* 2022; 14(8): 309-14. Article. Not Indexed

● Research projects

Aladro Benito Y. Monitoring of gait impairment progression using wearable sensors in patients with progressive multiple sclerosis. Roche. Merck-Serono. 2021-Ongoing.

Management centre: Hospital Universitario de Getafe